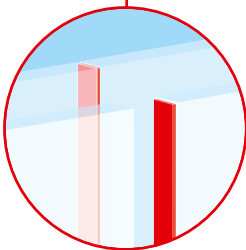
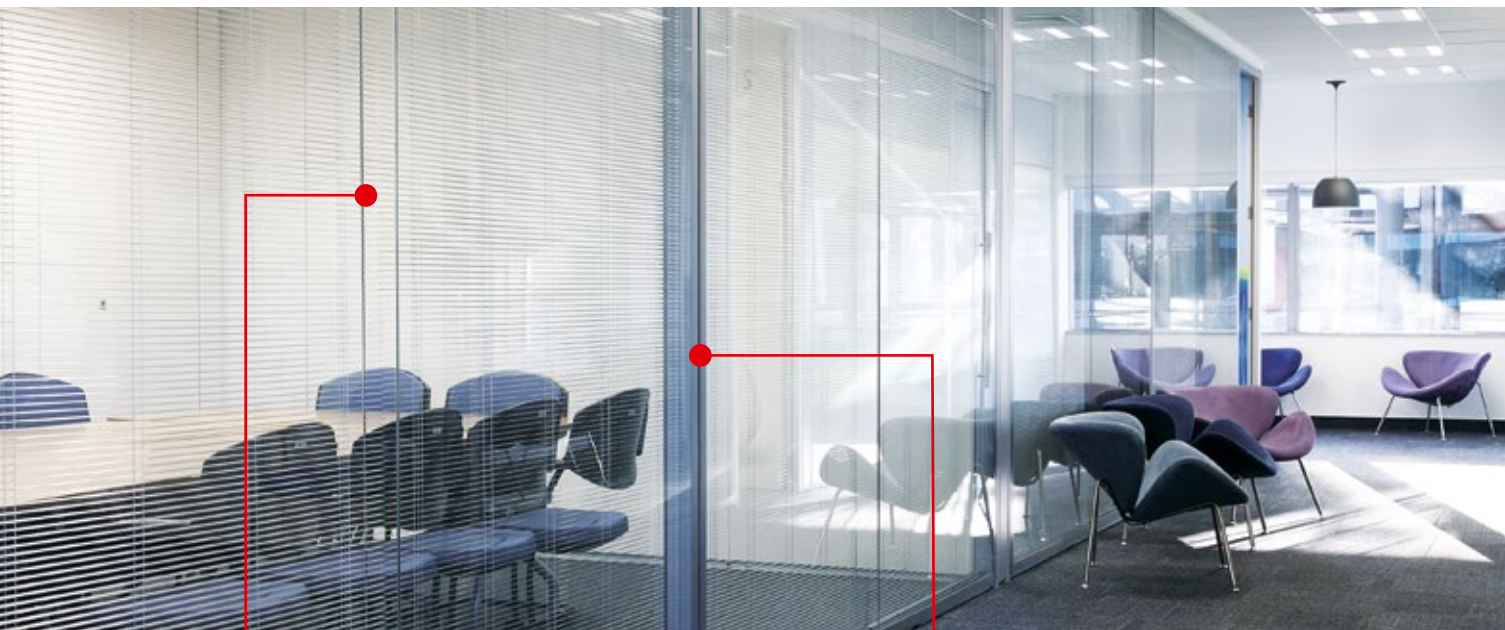




# PERFECT FIT FOR INTERIOR FIT-OUT

Our Bonding Solutions for Maximized Efficiency

# OFFICE PARTITIONS



### Glass to glass

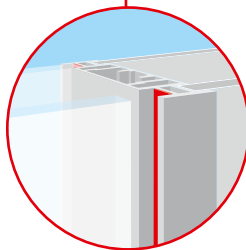
e.g. office partitions

#### Application requirements

- Immediate bonding
- Invisible joint possible
- Excellent resistance against UV, temperature, humidity and chemicals
- Complete seal mitigating noise and smell transfer
- Compensation of uneven surface (glass)

#### Product recommendation

tesa® ACX<sup>plus</sup> 704x  
tesa® ACX<sup>plus</sup> 705x  
tesa® ACX<sup>plus</sup> 707x



### Glass in frame

e.g. office partitions and clean rooms

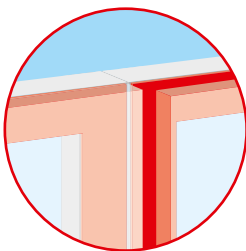
#### Application requirements

- Immediate bonding on glass, profile or frame materials such as plastics, aluminum or wood
- Excellent resistance against UV, temperature, humidity and chemicals

#### Product recommendation

tesa® ACX<sup>plus</sup> 704x  
tesa® ACX<sup>plus</sup> 705x  
tesa® ACX<sup>plus</sup> 707x

# Clear Advantages in Productivity, Durability and Design



### Glass to frame (flush design)

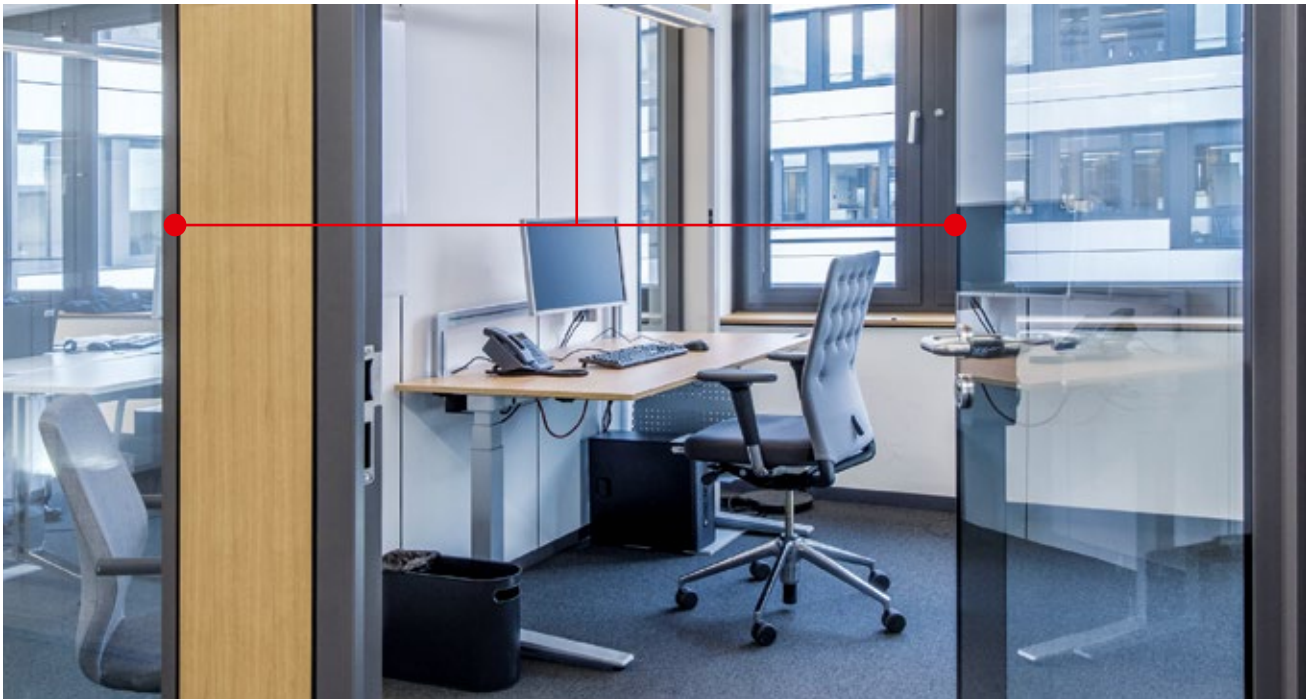
e.g. glass partitions and clean rooms

#### Application requirements

- Immediate bonding on glass, powder coats or aluminum
- Stable bond to keep glass panel in place
- Possible to achieve a flush design: optical tape coverage not needed
- tesa tools for bubble free application on glass

#### Product recommendation

tesa® ACX<sup>plus</sup> 704x  
tesa® ACX<sup>plus</sup> 707x  
tesa® ACX<sup>plus</sup> 709x



#### tesa® ACX<sup>plus</sup> 7078, tesa® ACX<sup>plus</sup> 7058

Compatibility of tesa® ACX<sup>plus</sup> and PVB foil of laminated safety glass

- Report No. 13-000979-PR01
- Report No. 13-000979-PR02



#### tesa® ACX<sup>plus</sup> 7078

Sound reduction test

- Report No. 82013-LACUS-IN-40 T2



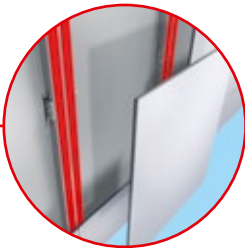
#### tesa® ACX<sup>plus</sup> 7078

Safety in use, mechanical resistance and stability tests according to ETAG003

- Report No. 4\_04922



# INTERIOR WALL CLADDING



Panels/mirrors to wall

e.g. interior decoration for commercial buildings and hotels

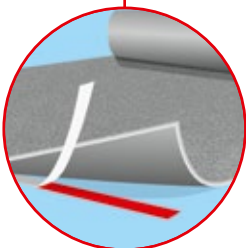
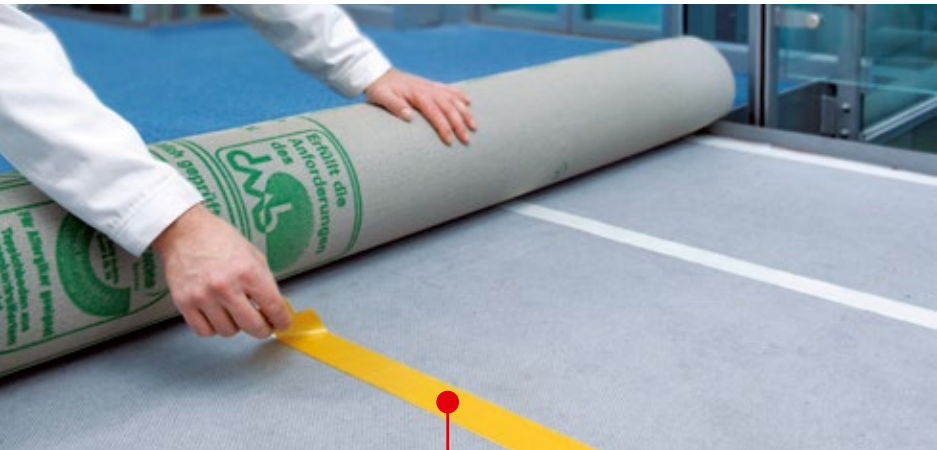
**Application requirements**

- Immediate bonding on different substrates (panel and substructure)
- Stable bond to keep panel in place
- High shear resistance when bonding larger/heavy elements

**Product recommendation**

tesa® 62936 (for smaller panels < 1.5 m)  
tesa® ACX<sup>plus</sup> 707x

# FLOORING



- Permanent fixing of flooring materials
- Application requirements**
- Secure bonding of rough and fibrous material, e.g. carpets
  - Reliable mounting of planks, sheets or tiles made of different material (vinyl, wood, laminates etc.)
  - Excellent outdoor resistance if needed
- Product recommendation**  
tesa® 4939 (carpet and vinyl)  
tesa® 625xx (planks)

## Benefits of working with tapes

			Double-sided tapes	Liquid glue	Mechanical fastening (e.g. rivets, screws, nails)
Design		Improved visual appearance – no damage to the material	....	...	.
		Invisible fastening – mounting of transparent materials	....	...	.
Assembly		Fast application process – elimination of curing time and reduction of complexity	....	.	..
		Healthy working environment and clean production sites	....	..	..
Quality		Compensation of irregular or uneven surfaces – gaps between bonded surfaces are eliminated	...	....	.
		Compensation of tension and stress dissipation – single bonding point with mechanical fasteners can lead to material breakage	....	..	.
		Noise-dampening properties – sounds caused by vibration are eliminated	....	...	.
		Shock absorption	....	..	.
		Sealing function – tape seals and protects against dust and moisture	....	....	..
		Reduced risk of corrosion	....	....	.

.... Very good    ... Good    .. Medium    . Low

Taking your  
**Processes**  
to the Next Level



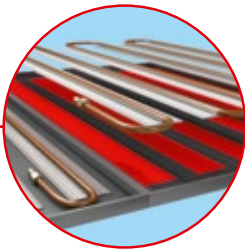
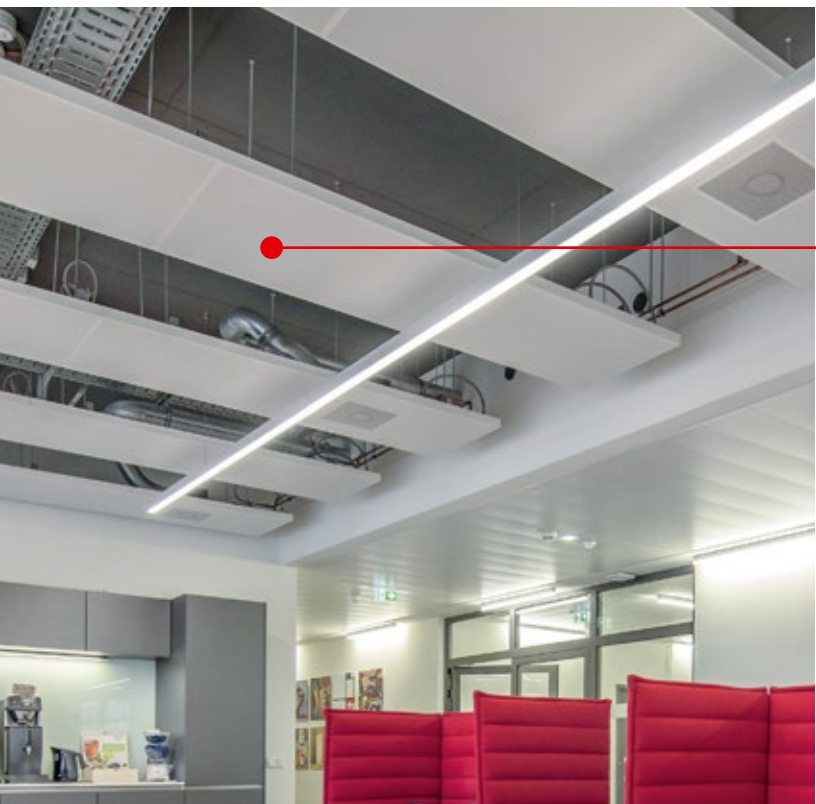
**tesa® 62936**  
Confirms longterm adhesion performance after IEC 61215/61646 climate tests and a 85°C temperature resistance.  
• Report No. 21209595



**tesa® 62936**  
Confirms mechanical strength tested at low & elevated temperature after temperature/UV aging and after aging in water/cleaning solution.  
• Report No. 10-000666-PB01-K01-09-en-02



# HEATED AND CHILLED CEILINGS



## Bonding of heat conducting rails

- Application requirements**
- High thermal conductivity
  - Immediate bonding on metal surfaces
  - Black PET backing available

**Product recommendation**  
tesa® 4943  
tesa® 51982

## Technical product information

Product	Backing	Adhesive type	Color	Liner	Thickness [µm]	Temperature resistance short/long [°C]	Ultimate adhesion to steel [N/cm]	Additional thicknesses [µm]
Double-sided adhesive tapes								
tesa® ACX <sup>plus</sup> 7048	Foamed acrylic	Pure acrylic	Gray/white	Filmic	2000	170/120	38	500, 1000, 1500
tesa® ACX <sup>plus</sup> 7058	Solid acrylic	Pure acrylic	Transparent	Filmic/paper	2000	200/100	29	500, 1000, 1500, 3000
tesa® ACX <sup>plus</sup> 7078	Foamed acrylic	Pure acrylic	Black	Filmic/paper	2000	220/120	40	500, 1000, 1500
tesa® 62510	PE foam	Tackified acrylic	Black/white	Filmic/paper	1000	80/80	13.5	500, 800, 1100, 1200, 1600
tesa® 62936	PE foam	Tackified acrylic	Black/white	Filmic/paper	1600	80/80	19	500, 800
tesa® 4939	Cloth	Synthetic rubber	White	Glassine	250	80/40	5.5	–
tesa® 4943	Non woven	Tackified acrylic	Transparent	Paper	100	100/70	8.1	–
tesa® 51982	PET film	Tackified acrylic	Black	Filmic/paper	100	200/100	11.7	–

## Improved processes with engineered tools

Our solutions go beyond tape. We provide technical consulting and proven application tools, in order to implement a fast and reliable production process at our customers. tesa® application systems are easy to use and enable constant quality. We are scaling them depending on production output and complexity. Benefit from an individual and cost-efficient solution.



## New product feature creates benefits for partition wall applications



**Adhesive Neutralized Edges**  
We invented a process of applying a very thin glass-like layer to the edges of tape rolls. With our process we offer our customers a highly transparent tape with Adhesive Neutralized Edges:  
• tesa® ACX<sup>plus</sup> 7058  
• tesa® ACX<sup>plus</sup> 75530  
are optionally available with this feature.

- Benefits**
- Easy handling of tape rolls in the assembly process
  - Tape edges stay free of contamination from dust or dirt
  - Premium optical appearance of the mounted partition wall
  - Easy cleaning after installation





© Ron Blunt

12/2016



Our management system is certified according to the standards ISO 9001, ISO/TS 16949, and ISO 14001.