

A close-up photograph showing a pair of hands applying a white adhesive tape to a bundle of white cables. The cables are resting on a grey, metallic-looking surface. The background is slightly blurred, showing industrial equipment with blue hoses. The overall scene suggests a manufacturing or assembly process.

ADDING VALUE TO YOUR TRIMS AND PROFILES

Proven Tape Solutions and Efficient Processes

ABOUT US

tesa – A Global Partner

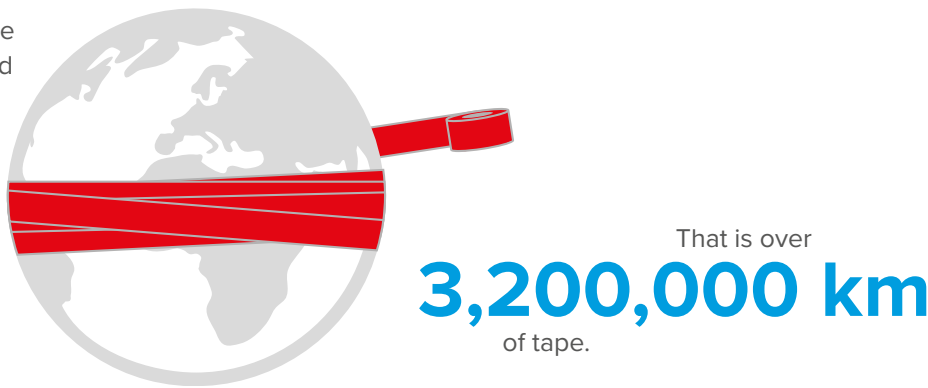
We are one of the leading global manufacturers of self-adhesive tapes. Our product solutions prove their excellence in countless industrial sectors around the globe. Our sales offices, R & D centers, and production facilities offer worldwide support. For decades our high-quality adhesive tape solutions have been the product of choice for mounting trims and profiles. Professionals in industrial manufacturing, tradespeople, and consumers all over the world use them to protect their products. Our expertise goes beyond tape, as we offer a comprehensive and technical product package.



Tapes That Go Around the World

Did you know that over the past decade, we have sold enough tape go around the world

80 times?



CUSTOMER FOCUSED

With You Every Step of the Way



Partnerships

Our adhesive tapes are developed to meet your demands. We take pride in obtaining a deep level of understanding of your production process and requirements. Through this approach, we work with you to provide comprehensive solutions that eliminate production pain points and create greater efficiency.

Our support extends past the initial product selection: we focus on being a partner throughout the life cycle of your product.



Consulting and technical sales support

Our technical sales and application engineers provide exclusive testing by analyzing your trims and profiles in combination with our adhesive tape assortment. Our support services include the following:

- Tape suggestions
- On-site training and application support
- Environmental simulation and material testing
- Support for surface pretreatment processes



Efficient processes

Our long spool lengths and dispensers help systems run smoothly without interruption. We provide the following:

- Dedicated experts for dispensing setup and training
- Fewer changes due to long spool lengths
- Individual lamination units
- Easy retrofitting to your line



Local stock

Our goal is to be close to the customer and our logistics setup supports this. You benefit from the following:

- Availability of products
- Short lead times
- Low minimum-order quantities
- Local availability due to global presence

THE IMPORTANCE OF SPOOLS



Our solutions allow you to automate and apply tesa® tape in-line for a fast, simple, and clean process. By using long-length spools, you minimize your total production costs through reduced changeover times and waste.

Many of our products are available in long spool lengths.

We offer the following:

- Precise, high-quality spooling for easy unwinding
- Tape widths: from 4 to 45 mm
- Tape lengths: up to 7,000 m
- Core widths from 180 mm to 380 mm
- Different paper and film liners for all processes

Process Improvements with Spools



Spools: 7,000 m

- Shorter changeover times
- Reduced waste volume
- Lower production costs

VS.



Rolls: 50–500 m

- For shorter production runs
- For more individualized projects

DISPENSERS

Our dispensing solutions help lamination and extrusion systems run continuously without interruption. We take your requirements and then apply our expertise to create the perfect setup for your process. With our solutions, you will enjoy several benefits:

- Flexible lamination that takes place from all sides
- A mobile dispenser rack that can unwind up to four strips of tape at a time
- A brake buffer system for stop-and-go processes to unwind at higher speeds or rewind the interliner

In addition to the systems themselves, we also ensure the equipment can be placed in an unobtrusive and optimized area. We remain on-site to train the production workers so that they are comfortable and confident using the equipment.



READY-TO-MOUNT TRIMS AND PROFILES

Adhesive tapes add value to extruded trims and profiles by making them a “ready-to-mount” solution.

Benefits for the extruder:

- Enhanced product value
- Access to a wider market
- In-line tape application without the need to reduce speed

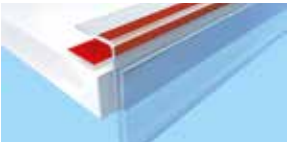
Benefits for the end user:

- Invisible, clean bonding method
- Unpack and apply – fast and easy application
- Excellent bonding results



MARKET SOLUTIONS

Retail and Display / POS



Shelf-edge strips



Magnetic strips

Shelf-edge strips are found in every supermarket. They are mounted on different shelf materials and must be able to withstand the stresses of price tags or goods being exchanged.

- Benefits:**
- Removable so labels can be adjusted and secured
 - Resistant to wear and tear caused by consumers and staff
 - Residue-free removal

Our recommendations for this industry:

- **Removable tape solutions**
- **Permanent tape solutions**

See pages 10/11 for additional information.

Furniture



Edge protection



Decorative trim

The final design of a piece of furniture is determined by the trims and profiles mounted on it. Regardless of the bonding surface or the stresses that may occur, an invisible and durable bond is key.

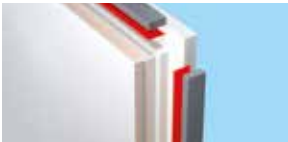
- Benefits:**
- Transparent bonding that allows sleek, and modern designs
 - Secure adherence to hard-to-bond-to surfaces
 - Permanent bond that withstands impact and friction

Our recommendations for this industry:

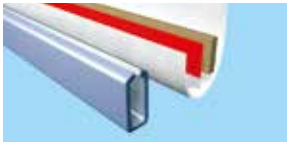
- **Removable tape solutions**
- **Permanent tape solutions**

See pages 10/11 for additional information.

Windows and Doors



Intumescent seals



Roller-blind rails



Roller-blind tubes



Muntin bars

Windows and doors are an important building element in terms of design, energy efficiency, and convenience. Strong, highly resistant double-sided tapes must withstand outdoor and indoor conditions all while being as durable as the window or door itself.

- Benefits:**
- Resistant to outdoor conditions
 - Faster processing times
 - More uniformity due to tape gap filling and compensation

Our recommendations for this industry:

- **Cold-temperature tape solutions**
- **Permanent tape solutions**

See pages 10/11 for additional information.

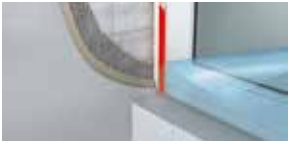
Building Profiles



Window skirting



Cable channels



Plastering trims



Glass-partition profiles

From decorative wall coverings to office partitions, our tapes play an important role in bonding materials to create a clean, aesthetically pleasing appearance.

- Benefits:**
- Resistant to outdoor conditions
 - Invisible bond that allows freedom of design
 - Low temperature bonding

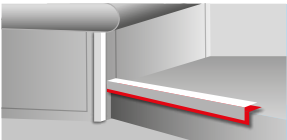
Our recommendations for this industry:

- **Cold-temperature tape solutions**
- **Permanent tape solutions**

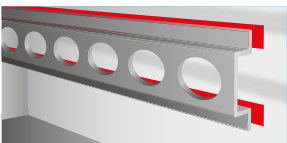
See pages 10/11 for additional information.

MARKET SOLUTIONS

Transportation Profiles



Profile mounting



Load-lock mounting



Protective mounting

Attachment parts need to be securely mounted on exterior body surfaces, and the bond has to withstand all external influences throughout the vehicle's lifetime.

Benefits:

- Resistant to outdoor conditions
- Bond that withstands impact and vibrations
- Adherence to hard-to-bond-to surfaces

Our recommendations for this industry:

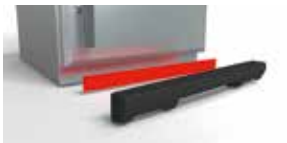
- Cold-temperature tape solutions
- Specialty tape solutions
- Permanent tape solutions

See pages 10/11 for additional information.

Appliances



Edge protection



Dust protection brushes

Appliances encounter daily wear and tear from consumer usage. Our adhesive tapes ensure that trims and other mounted elements stay intact for the lifetime of the product.

Benefits:

- Bond that withstands impact and vibrations
- Compensation for design variations
- High transparency

Our recommendations for this industry:

- Cold-temperature tape solutions
- Permanent tape solutions

See pages 10/11 for additional information.

Other Applications

We provide adhesive solutions for a number of industries. To receive more information about other applications for the trims and profiles market, please consult your local tesa sales representative.



Corner guards

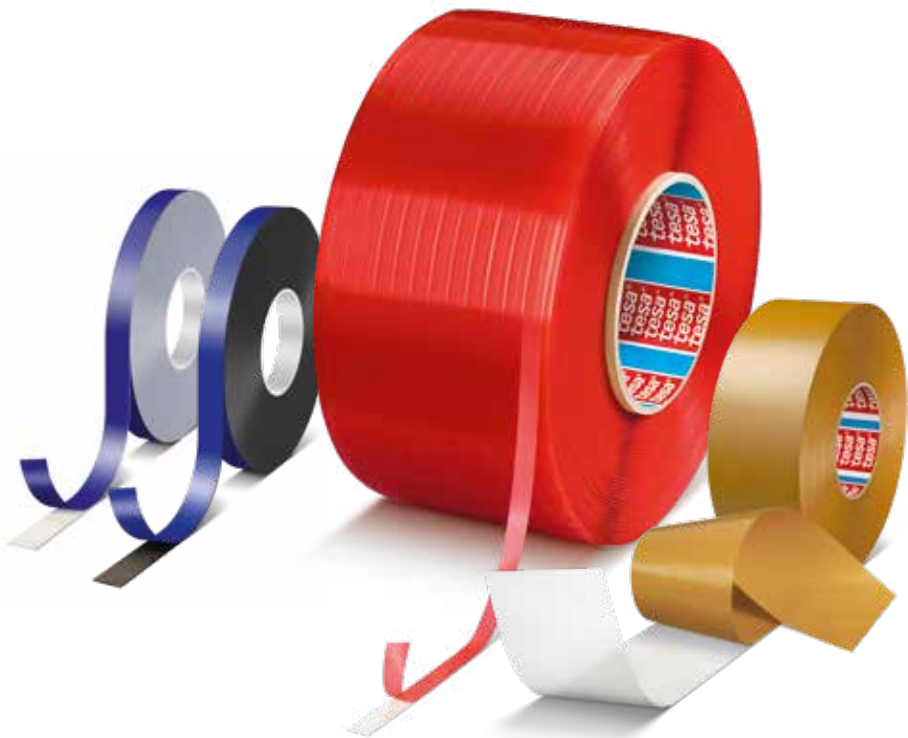


LED-strip mounting



Base rails

Supporting Unlimited Design Possibilities



PRODUCT ASSORTMENT

Permanent tape solutions*

| Product/Series | | Thickness (µm) | Adhesive | Backing | Color | Peel Adhesion (Steel) [N/cm] | Temperature Resistance (C°) Long/Short | Special Features |
|-------------------------|---------------------------------------|-------------------|-------------------|----------------|-------------|---------------------------------------|---|---|
| Acrylic Core Tapes | tesa® ACX ^{plus} 705X Series | 500–3,000 | Pure acrylic | Solid acrylic | Transparent | 24 | 100/200 | <ul style="list-style-type: none">High transparencyGlass or acrylic bonding |
| | tesa® ACX ^{plus} 706X Series | 500–3,600 | Tackified acrylic | Foamed acrylic | Deep black | 30 | 70/170 | <ul style="list-style-type: none">High bonding strengthPlasticizer resistance |
| | tesa® ACX ^{plus} 707X Series | 500–5,800 | Pure acrylic | Foamed acrylic | Deep black | 30 | 120/220 | <ul style="list-style-type: none">Temperature and cold-shock resistanceBond that withstands chemicals and cleaning agents |
| | tesa® 756XX Series | 200–400 | Modified acrylic | Acrylic | Black | 17 | 90/180 | <ul style="list-style-type: none">High shock performance and antirepulsion propertiesPET liner |
| Foam Tapes | tesa® 649XX Series | 800–1,600 | Synthetic rubber | PE foam | Black/white | 4 | 40/60 | <ul style="list-style-type: none">Excellent tack and high bonding strengthFor indoor applications |
| | tesa® 625XX Series | 500–3,000 | Modified acrylic | PE foam | Black/white | 13.5 | 80/80 | <ul style="list-style-type: none">Very good bonding strength on rough and critical surfacesFor moderate indoor and outdoor applications |
| | tesa® 629XX Series | 500–1,600 | Modified acrylic | PE foam | Black/white | 17 | 80/80 | <ul style="list-style-type: none">Excellent bonding strength on rough and critical surfacesFor demanding indoor and outdoor applications |
| Thin Double-Sided Tapes | tesa® 51865 | 165 | Modified acrylic | PET | Transparent | 13.7 | 100/200 | <ul style="list-style-type: none">For extrusion processesFor long-term useFor demanding applications |
| | tesa® 51970 | 220 | Modified acrylic | PP film | Transparent | 13.5 | 80/130 | <ul style="list-style-type: none">Excellent tack on many surfacesFor moderate applications |
| | tesa® 4965 | 205 | Modified acrylic | PET film | Transparent | 11.8 | 100/200 | <ul style="list-style-type: none">For long-term use in extrusionHigh performance on many materialsFor demanding applications |
| | tesa® 4970 | 225 | Modified acrylic | PVC film | White | 13.6 | 60/70 | <ul style="list-style-type: none">For hard-to-bond surfaces and flexible materials such as plasticized PVCFor moderate applications |
| | tesa® 4959 | 100 | Modified acrylic | Non-woven | Translucent | 8.5 | 80/200 | <ul style="list-style-type: none">UV and age resistancePlasticizer resistance |
| | tesa® 4943 | 100 | Tackified acrylic | Non-woven | Translucent | 8.1 | 70/100 | <ul style="list-style-type: none">For moderate indoor applicationsCost-efficient |
| | tesa® 64624 | 170 | Synthetic rubber | PP film | Transparent | 15 | 40/80 | <ul style="list-style-type: none">Excellent tack and high bonding strength even on low surface-energy substratesFor indoor applications |
| | tesa® 4934 | 200 | Synthetic rubber | Woven | White | 24 | 40/60 | <ul style="list-style-type: none">Excellent tack and bonding strength even on LSE materialsFor indoor applications |

*Peel adhesion values for product series are based on 1,000 µm thickness. For more information, please consult your local sales representative.

Removable tape solutions

| Product | Thickness (µm) | Adhesive | Backing | Color | Peel Adhesion (Steel) [N/cm] | Temperature Resistance (C°) Long/Short | Special Features |
|-------------|-------------------|------------------|----------|---------|---------------------------------------|---|--|
| tesa® 65605 | 500 | Acrylic | PE foam | White | 3 ¹ 17 ² | 80/80 | <ul style="list-style-type: none">Residue-free removability of the covered sideRepositionable |
| tesa® 65610 | 1,200 | Modified acrylic | PE foam | White | 4 | 80/80 | <ul style="list-style-type: none">Easy removability of foam residues |
| tesa® 4917 | 90 | Modified acrylic | PP film | Transp. | 4.1 ¹ 11.4 ² | 80/120 | <ul style="list-style-type: none">Covered side reversible |
| tesa® 66505 | 50 | Modified acrylic | PET film | Transp. | 0.10 ¹ 10 ² | n/a | <ul style="list-style-type: none">Open side reversibleExcellent for converting processes |

Cold temperature tape solutions*

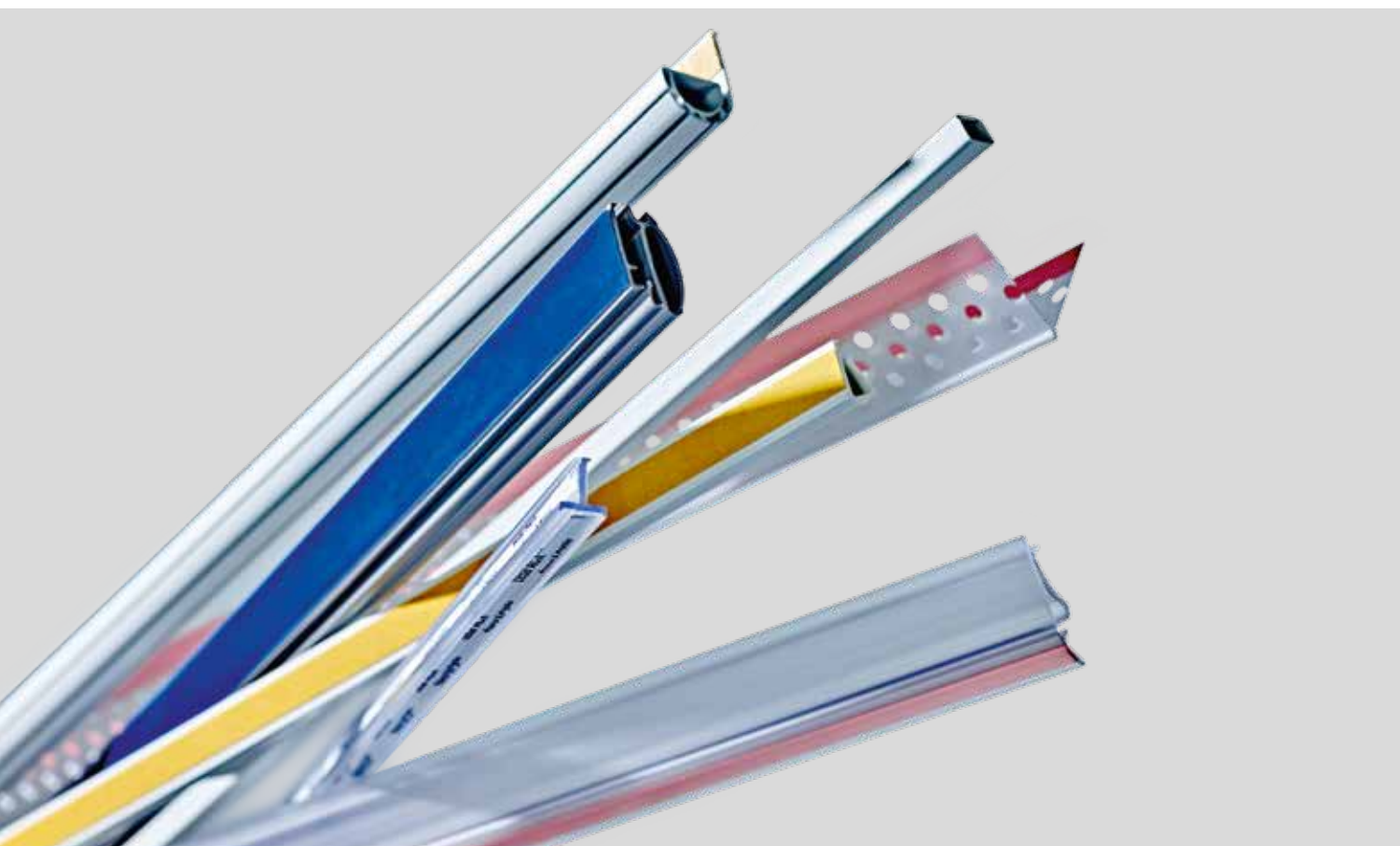
| Product | Thickness (µm) | Adhesive | Backing | Color | Peel Adhesion (Steel) [N/cm] | Temperature Resistance (C°) Long/Short | Special Features |
|---------------------------------------|-------------------|------------------|----------------|------------|---------------------------------|---|---|
| tesa® ACX ^{plus} 709X Series | 500–2,000 | Special adhesive | Foamed acrylic | Deep black | 40 | 80/100 | <ul style="list-style-type: none">Applicable at 0°CHigh bonding and load-bearing properties |
| tesa® 62957 | 1,000 | Pure acrylic | PE foam | White | 13.5 | 60/80 | <ul style="list-style-type: none">High performance on a variety of different substrates, especially at temperatures down to -10°C |
| tesa® 51920 | 200 | Pure acrylic | PP | White | 13 | 60/110 | <ul style="list-style-type: none">High performance at temperatures down to -10°CCompliant with LEED and indirect-food-contact requirements |

Specialty tape solutions

| Product | Thickness (µm) | Adhesive | Backing | Color | Peel Adhesion (Steel) [N/cm] | Temperature Resistance (C°) Long/Short | Special Features |
|-------------|-------------------|------------------|----------------|-------------|---------------------------------|---|--|
| tesa® 74508 | 840 | Modified acrylic | Foamed acrylic | Deep black | 26 | n/a | <ul style="list-style-type: none">Heat-sealable tapeShock resistanceHumidity and UV resistance <ul style="list-style-type: none">Performance oriented and cost-efficient |
| tesa® 4952 | 1,150 | Modified acrylic | PE foam | White | 8 | 80/80 | |
| tesa® 4957 | 1,100 | Modified acrylic | PE foam | Black/white | 4 | 80/80 | |

¹ Reversible side

² Permanent side



11/2018



Our management system is certified according to the standards ISO 9001, ISO/TS 16949, and ISO 14001.